

Finish Grade  
 Concrete footing  
 6 places  
 (See page 2)

Item #	Part #	Description	Qty
1	RMTB278X12GX24	2-7/8" Tube 156" Long	6
2	RMTB238X11GX20	2-3/8" Tube 117" Long	6
3	RMTB238X11GX20	2-3/8" Tube 180" Long	2
4	RMTB158X16GX21	1-5/8" Tube 113" Long	16
5	RMTB158X16GX21	1-5/8" Tube 111-3/16" Long	2
6	VCIRAILENDEND158	Rail End Cap for 1-5/8"	36
7	VCIBB278	Brace Bands for 2-7/8"	30
8	VCIBB238	Brace Bands for 2-3/8"	6
9	CI12ELB1	Elbow for 2-7/8" Uprights	6
10		T Fitting for top rail	2
11		Left & Right Corner Fitting	2
12	HWCB5161	5/16" X 1" Carriage Bolt	36
13	HWFLWA516	5/16" Flat Washer	36
14	HWLN516	5/16" Nylock Nut	36
15	HWSC581	5/8" X 1" Set Screw	36
16		Top Rail Joiner	1

# L.A. STEELCRAFT

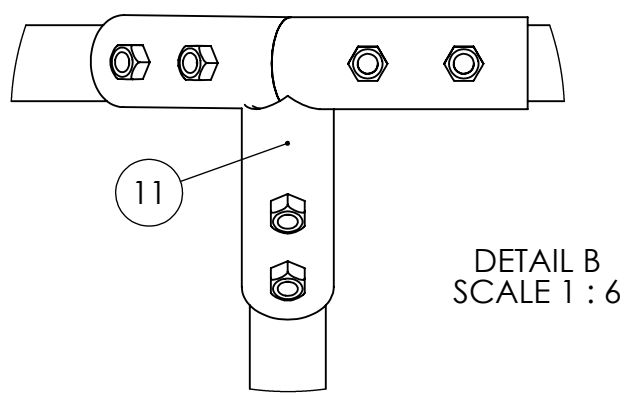
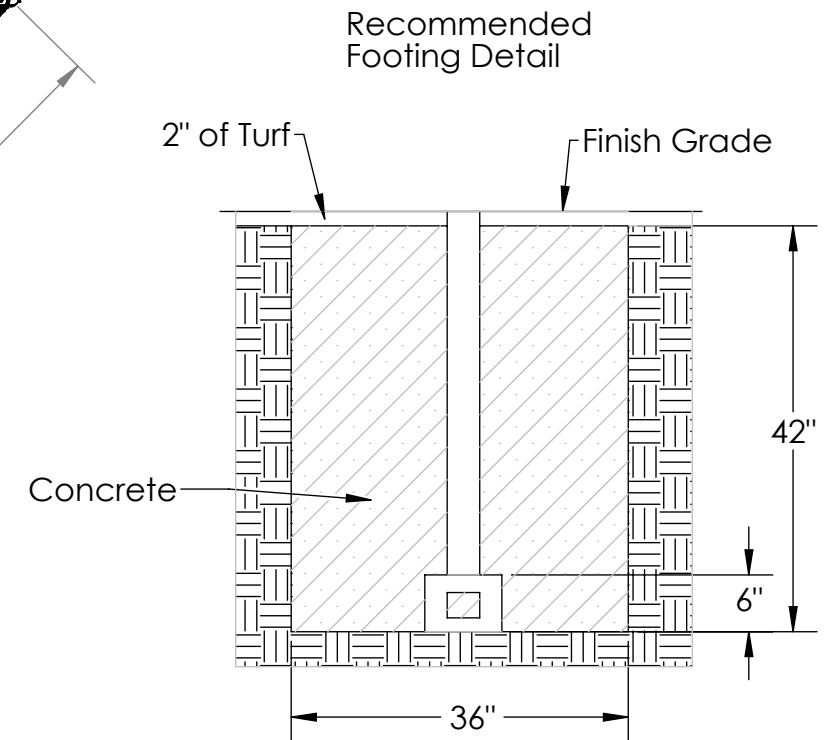
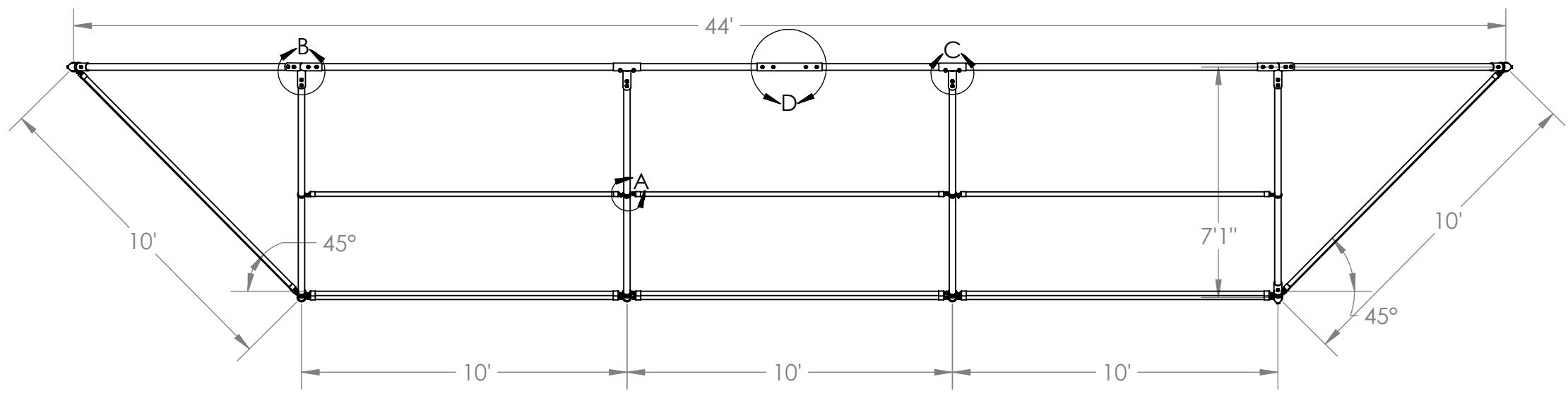
MATERIAL: A36	REV. DATE: 12/21/2020			
UNLESS OTHERWISE SPECIFIED	DRAWN BY: JBN			
DIMENSIONS ARE IN INCHES	ENG APPR:			
TOLERANCES: FRACTIONAL ± 1/4" ANGULAR: MACH ± 1° BEND ± 1/4"	TITLE:			
PROPRIETARY AND CONFIDENTIAL	<b>1044</b>			
THE INFORMATION CONTAINED IN THIS DRAWING IS THE SOLE PROPERTY OF PW ATHLETIC MFG. CO. ANY REPRODUCTION IN PART OR AS A WHOLE WITHOUT THE WRITTEN PERMISSION OF PW ATHLETIC MFG. CO IS PROHIBITED.	<table border="1"> <tr> <td>SIZE <b>B</b></td> <td>DWG. NO. <b>1044 SPEC</b></td> <td>REV <b>A</b></td> </tr> </table>	SIZE <b>B</b>	DWG. NO. <b>1044 SPEC</b>	REV <b>A</b>
SIZE <b>B</b>	DWG. NO. <b>1044 SPEC</b>	REV <b>A</b>		
SCALE: N/A	WEIGHT:			
SHEET 1 OF 3				

4

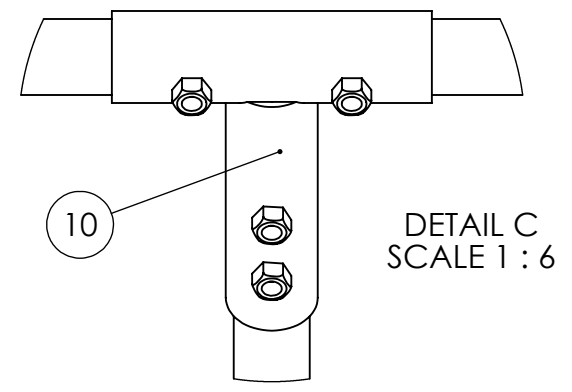
3

2

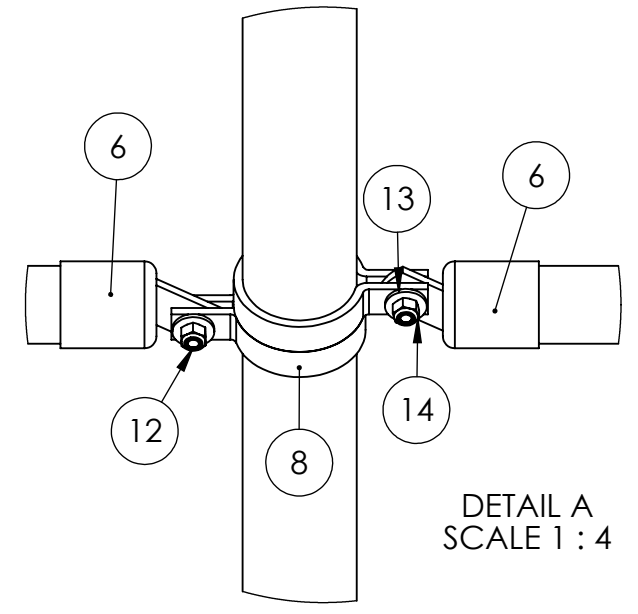
1



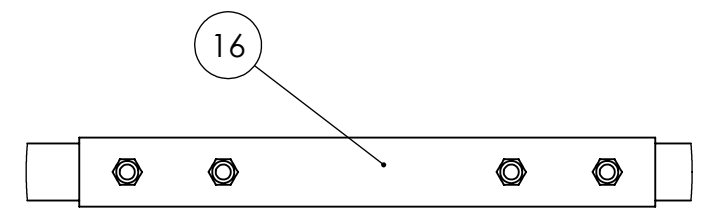
DETAIL B  
SCALE 1 : 6



DETAIL C  
SCALE 1 : 6



DETAIL A  
SCALE 1 : 4



DETAIL D  
SCALE 1 : 8

# L.A. STEELCRAFT

MATERIAL: A36	REV. DATE: 12/23/2020			
UNLESS OTHERWISE SPECIFIED	DRAWN BY: JBN			
DIMENSIONS ARE IN INCHES	ENG APPR:			
TOLERANCES: FRACTIONAL $\pm 1/4"$ ANGULAR: MACH $\pm 1^\circ$ BEND $\pm 1/4"$	TITLE:			
PROPRIETARY AND CONFIDENTIAL	<b>1044</b>			
THE INFORMATION CONTAINED IN THIS DRAWING IS THE SOLE PROPERTY OF PW ATHLETIC MFG. CO. ANY REPRODUCTION IN PART OR AS A WHOLE WITHOUT THE WRITTEN PERMISSION OF PW ATHLETIC MFG. CO IS PROHIBITED.	<table border="1"> <tr> <td>SIZE <b>B</b></td> <td>DWG. NO. <b>1044 SPEC</b></td> <td>REV <b>A</b></td> </tr> </table>	SIZE <b>B</b>	DWG. NO. <b>1044 SPEC</b>	REV <b>A</b>
SIZE <b>B</b>	DWG. NO. <b>1044 SPEC</b>	REV <b>A</b>		
	SCALE: N/A WEIGHT:			
	SHEET 2 OF 3			

4

3

2

1

B

B

A

A

# Installation Instructions

1. Dig holes per the footing detail and overhead view on page 2.
2. Use a shim material to get the proper bury depth and plumb and level the uprights (1) ensuring that the correct spacing is maintained by assembling a horizontal bar(4) with endrail caps(6) and brace band(7) between uprights(1). Pour concrete into footings and wait 48 hours before proceeding.
3. Place elbows (9) on the uprights, place tubes (2) into elbows toward opening of backstop. Place corner peices (11) and "T's (10) onto top post on both sides and assemble onto the angled tubes (2). Place spline peice (16) onto top post. Center spline over the two top posts to hold them together. Ensure alignment and tighten all set screws.
4. Put end rail caps(6) on horizontal peices(4)(5) and attach them to uprights(1) using the brace bands(7)(8) and hardware(12)(13)(14).
5. Separate the wire mesh. The heavier 9 gauge is used for the rear panel and wings. The lighter 11 gauge is used for the hood section. Use the 10 foot tension bars and tension bands to secure the mesh to the uprights. Tension bands are used every 18 to 20 inches on center. Mesh must be tight, remove mesh pieces to ensure proper tension.
6. Secure the mesh to the horizontal bars top middle and bottom with the tie wire.
7. Attach a 10' X 30' piece of 11 gauge mesh to the hood above the rear panel using tension bars and tension bands. Tension bands should be placed every 18 to 20 inches. Secure mesh to cross bars every 12" with tie wire.
8. Cut a 10ft piece of the 11 gauge mesh into a triangle use the hood triangle as a template.
9. Use 2 tension bars and tension bands to secure and tension the mesh to the backstop.
10. Pull the mesh to the horizontal bar and secure it every 8" with the tie wire.
11. Inspect backstop for any loose hardware and tighten. Check for sharp wire either cut of or turn back into the mesh. Make sure all set screws are hammered tight.

## Pick List

Description QTY

Description	QTY
1/4" X 1" Round HD U-Drive Screws	22
Upright Post 2-7/8" X 156"	6
Hood Support 2-3/8" X 117"	6
Horizontal Tube 1-5/8" X 113"	16
Horizontal 1-5/8" X 111-3/16"	2
Hood Rail 2-3/8" X 180"	2
CI12ELB1 2-7/8" x 2-3/8" Elbow	6
Hood Rail Joiner 2-7/8" X 24" Pipe	1
T Fitting 2-7/8" Pipe	2
Left & Right Corner Fittings 2-7/8"	2
Rail End Cap 1-5/8"	36
2-7/8" Brace Bands	30
2-3/8" Brace Bands	6
5/8" X 1" Set Screw	36
2-7/8" Tension Bands	36
2-3/8" Tension Bands	36
5/16" X 1" Carriage Bolt	108
5/16" Flat Washer	108
5/16" Nylock Number	108
10' Tension Bar	12
2" X 9 Gauge X 10' Wire Mesh	50'
2" X 11 Gauge X 10' Wire Mesh	50'
Tie Wire	200

# L.A. STEELCRAFT

MATERIAL: A36	REV. DATE: 12/28/2020
UNLESS OTHERWISE SPECIFIED	DRAWN BY: JBN
DIMENSIONS ARE IN INCHES TOLERANCES: FRACTIONAL $\pm 1/32"$ ANGULAR: MACH $\pm .5^\circ$ BEND $\pm 1/8$	ENG APPR:
PROPRIETARY AND CONFIDENTIAL THE INFORMATION CONTAINED IN THIS DRAWING IS THE SOLE PROPERTY OF PW ATHLETIC MFG. CO. ANY REPRODUCTION IN PART OR AS A WHOLE WITHOUT THE WRITTEN PERMISSION OF PW ATHLETIC MFG. CO IS PROHIBITED.	TITLE:  <b>1044</b>
SIZE <b>B</b>	DWG. NO. <b>1044 SPEC</b>
SCALE: N/A	WEIGHT: SHEET 3 OF 3
REV <b>A</b>	