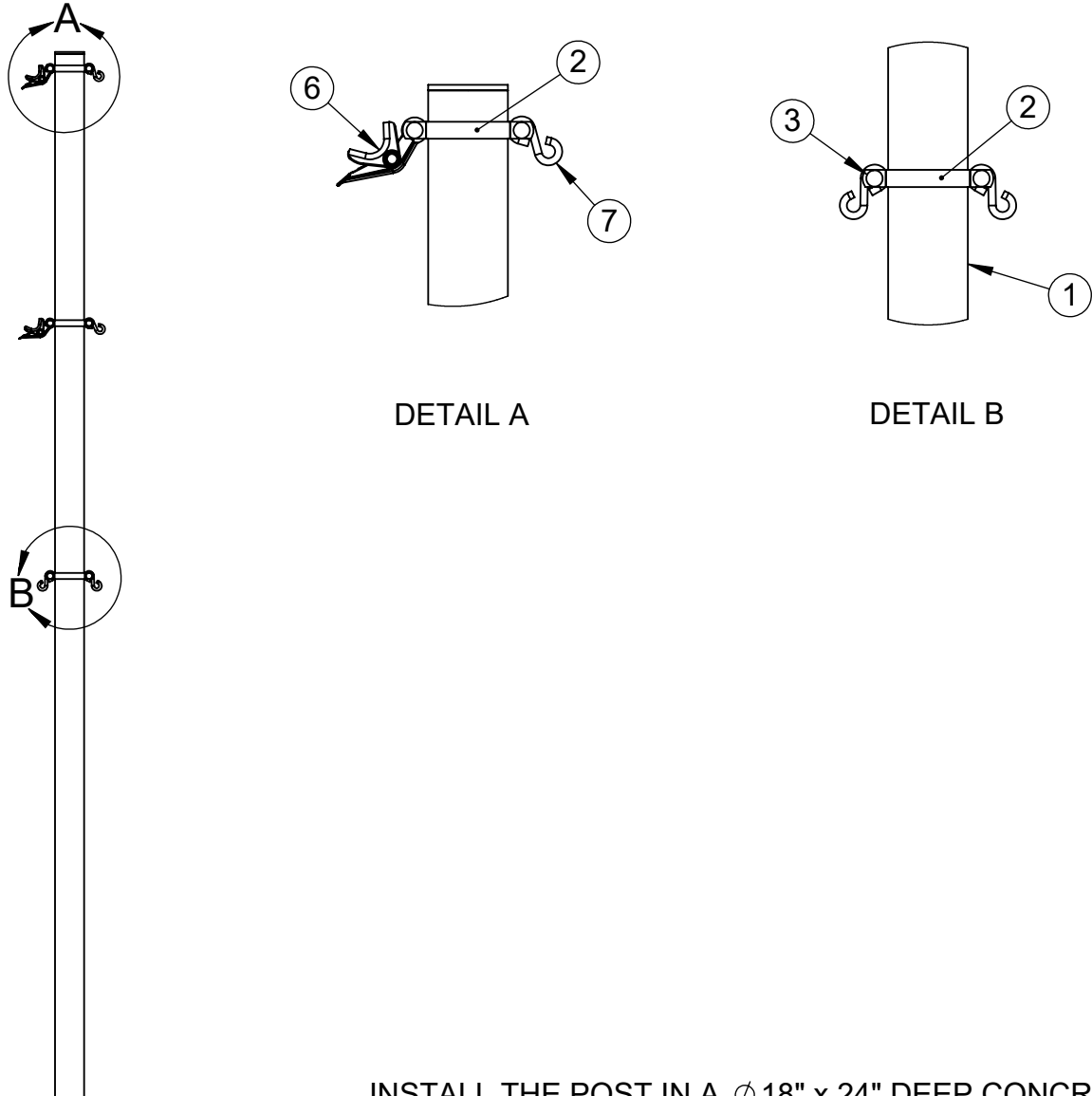


| ITEM NO. | PART NUMBER | DESCRIPTION                   | QTY. |
|----------|-------------|-------------------------------|------|
| 1        | W2216GPOST  | 3-1/2" O.D. GAME POST AND CAP | 1    |
| 2        | VCISPLIT35  | 3-1/2" SPLIT RAIL HALF CLAMP  | 3    |
| 3        | HWCB5161    | 5/16"-18 x 1" CARRIAGE BOLT   | 6    |
| 4        | HWFLWA516   | 5/16" USS FLAT WASHER         | 6    |
| 5        | HWLN516     | 5/16"-18 LOCK NUT             | 6    |
| 6        | 604-044     | ROPE CLAMP                    | 2    |
| 7        | HWSH516212  | 5/16" x 2-1/2" S-HOOK         | 4    |



INSTALL THE POST IN A  $\phi$  18" x 24" DEEP CONCRETE FOOTING OR POST SLEEVE. THE TOP OF THE POST IS 8'-6" ABOVE THE FINISH GRADE.



Date: 4/25/23

Rev:

Drawn: CW

Sheet: 1 of 1

PRODUCT NAME

INTERMEDIATE COMBO CENTER GAME POST

MODEL NO.

LA-VBP3-PEIC-SPEC