

#### **INSTALLATION DETAILS**

- Recommended crew (Adult): **2**
- Installation time: **4 hr (8 man hrs)**
- User age: **5-12**
- Use zone: **72"** from all edges of slide
- Weight:

**SURFACING: Use of safety surfacing in compliance with ASTM specification F1292 is required.**

#### **MAINTENANCE:**

- As the owner of the playground, you are responsible for maintenance of the equipment and play area. A maintenance schedule must be developed, and the equipment inspected frequently. A maintenance section that includes component specific maintenance requirements is included at the end of this manual.
- Be sure to inspect surfacing for foreign objects that could cause injury and that enough surfacing is in place in accordance with ASTM and CPSC standards.





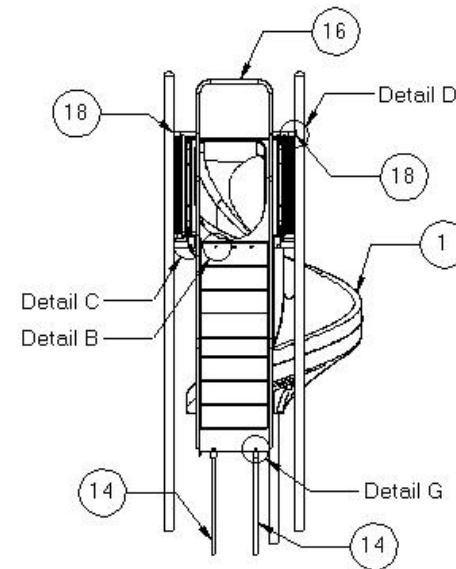
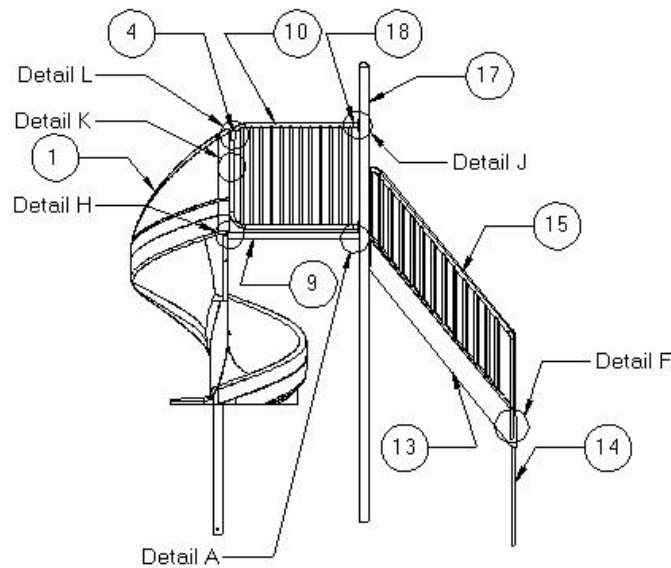
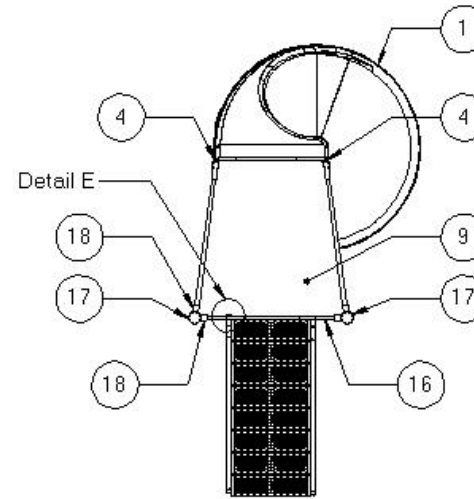
## 902-294 ORIGINAL 6' INDEPENDENT SPIRAL SLIDE INSTALLATION INSTRUCTIONS

### PARTS LIST

ID	PART #	DESCRIPTION	QTY
1	435-623	Spiral Slide	1
2	126-704	3/8" x 3" Button Head Bolts	4
3	516-200	3/8" Toggles	6
4	903-201	Spiral Slide Filler Angle	2
5			
6			
7			
8	435-625	Loctite	1
9	923-198	Transition Deck	1
10	913-431	Wall for Spiral Slide	2
11			
12			
13	905-712	Steps to 6' Deck	1
14	913-230	Transfer Point Inside Leg	2
15	913-714	Indep. Slide Handrail	2
16	913-405	Arch Entry for Double Bend Rails	1
17	912-250	13'4" Post	2
18	913-402	Four Hole Attachment Bracket	6
19	905-208	Gasket for Attachment Bracket	6
20	905-526	Self-Tapping Screw	24
21	106-807	3/8" x 3/8" Setscrew	6
22	126-701	3/8" x 1 1/4" Button Head Bolt	2
23	126-708	3/8" x 2 1/4" Button Head Bolt	9
24	126-703	3/8"x 1" Button Pin SS	7
25	126-702 BPS	3/8" x 1 3/4" Button Head Bolt	4
26	316-601	3/8" Flat Washer	39
27	226-602	3/8" Nylon Insert Lock Nut SS	13
28			
29	416-402BPK	7/32" Button Pin Key Short Arm	2

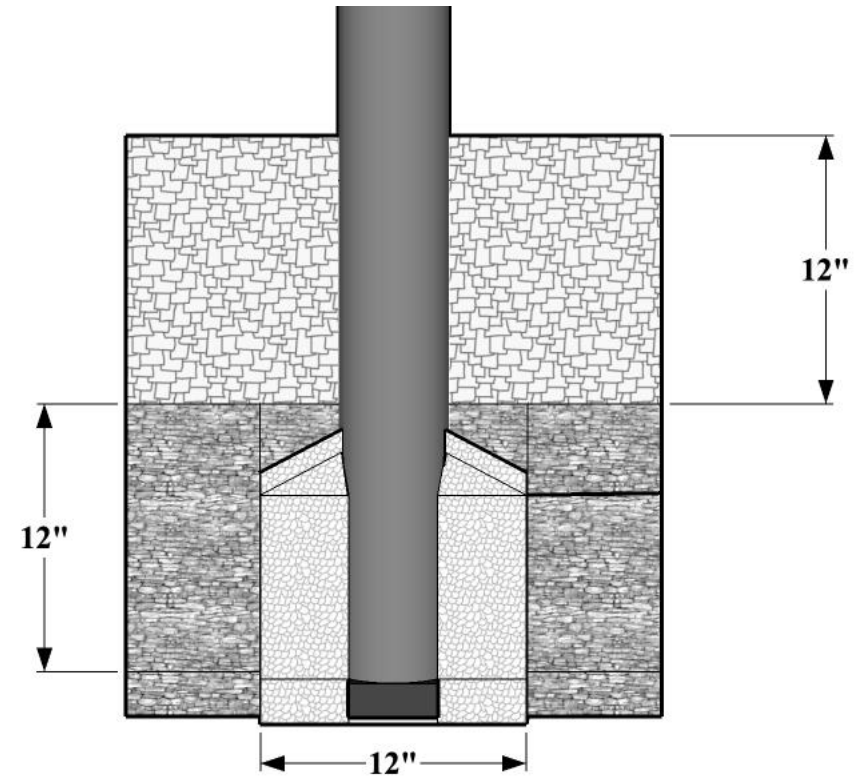
**NOTE:** Keep a copy of these instructions on file to assist you with maintenance and replacement parts.

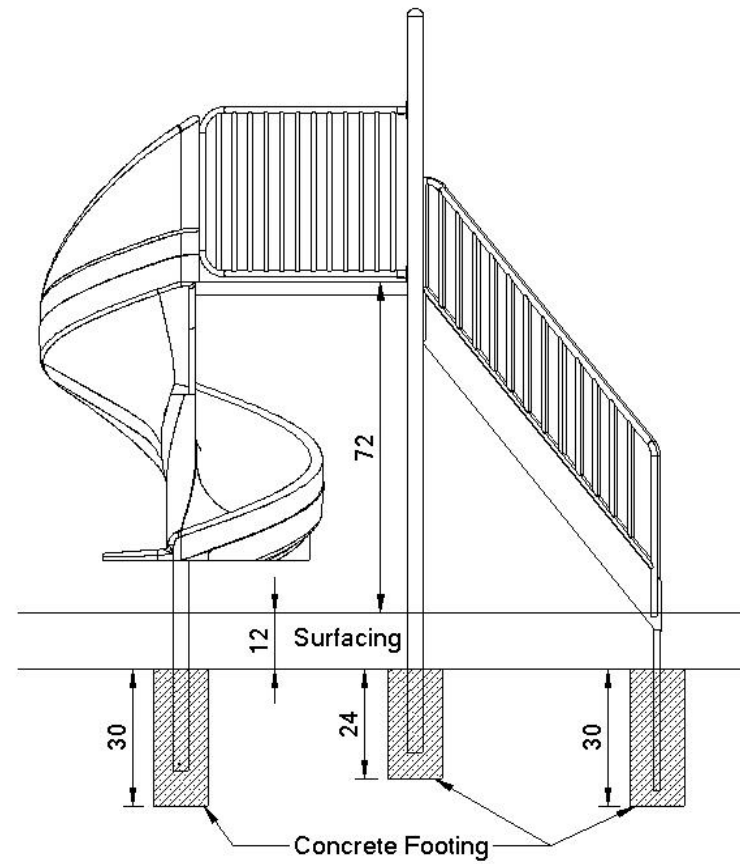
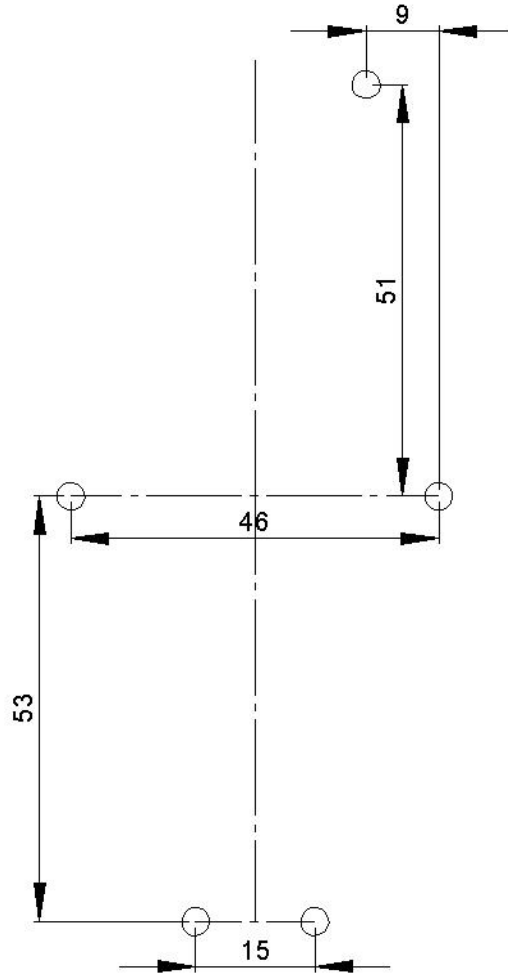
## 902-294 ORIGINAL 6' INDEPENDENT SPIRAL SLIDE INSTALLATION INSTRUCTIONS



### FOOTING INFORMATION

- Total footing depth is 24" less the height of the surfacing plus the height of the blocking material. If you are using 12" of surfacing the footing hole would need to be 12" plus the height of the blocking material (refer to both the side and front cutaway views to the right).
- If the Play structure is installed on an unlevel grade you must adjust the footing depth to accommodate the grade. For instance, if the grade for this component is 1" higher than the surface grade of the main playground post you must dig your footing hole 1" deeper.
- You must place the bottom of the support post or slide leg on a suitable flat blocking material to prevent it from sinking further into the soil. We recommend you use a brick, block of wood or several inches of gravel. The footing depth does not include this blocking material since materials used often vary.
- It is the owner/installers responsibility to check local building codes and to comply with those codes. All footing depths listed here are recommendations and local soil types and frost lines may require a deeper and/or wider footing depth. If that's the case you must add more blocking material to accommodate the deeper footing, as the post length will still only be installed at the depth listed in this instruction manual.
- Assemble the entire unit before adding the concrete unless instructed to do so in the individual component instruction sections.







## 902-294 ORIGINAL 6' INDEPENDENT SPIRAL SLIDE INSTALLATION INSTRUCTIONS

### **SPECIFICATIONS**

- Deck-12 GA HRPO steel
- Deck Coating – Electrostatically applied & oven cured thermoplastic powder coat.
- Paint – Electrostatically applied & oven cured powder coat
- Hardware – Stainless steel & tamper resistant
- Attachment Bracket – Powder coated cast aluminum
- Spiral Slide- Roto-Molded plastic

### **SPECIAL SAFETY & ASTM COMPLIANCE NOTES**

- (MUST INCLUDE SECTION IN STANDARD)

### **INSTALLATION TIPS & TROUBLE SHOOTING**

- SportsPlay Equipment Inc. recommends pre-drilling the holes in the post when attaching a four-hole bracket with a number #7 drill bit. This will make the attachment of the four-hole bracket with the self-tapping screws easier and it will prevent damage to the screw head during installation.
- Apply locktite to all bolts during assembly prior to completely tightening them.
- Stainless Steel hardware can occasionally be difficult to use particularly if you need to take them out to make an adjustment. It is recommended that you add a drop of oil to bolts that may have to be removed before you install them.
- Do not tighten bolts all the way until the unit is completely assembled and all components are square and level.
- Identify and separate all parts by referencing the detail drawings and the parts list.
- As you unpack and separate the components, use the cardboard sheets that were used for packing and shipping to prevent damage to the components. This is particularly true all Powder Coated and Thermoplastic coated components, by setting the components on top of the cardboard.

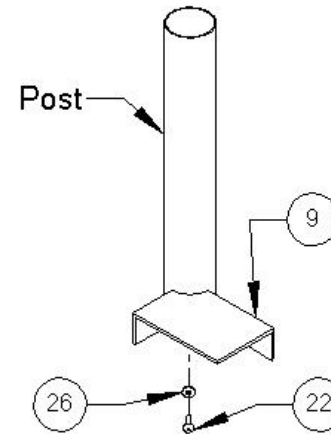
**BEFORE YOU BEGIN**

In addition to the components on the packing list you will need a level, blocking material, 9/16 wrench, shovel, Tape measure, drill with a 3/4" Drill bit and a #7 Drill bit, and a post hole digger.

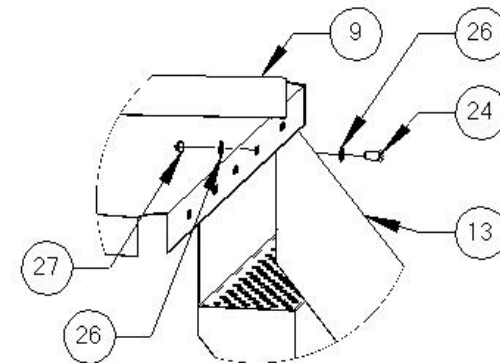
**INSTALLATION STEPS**

- \_\_1) **Review all instructions before beginning.**
- \_\_2) **Unpack, organize, and identify all components:** Be sure to place all painted components on a protective surface (cardboard, cloth, etc...) to prevent damage.
- \_\_3) **Locate placement of the Spiral Slide:** See top down view of your instruction booklet.
- \_\_4) **Dig Footing Holes:** Refer to the Footing Diagram on page 5.
- \_\_5) **Attach Transition Deck to Posts:** Attach the transition deck (9) to the two posts (17) using two 3/8" x 1 1/4" button head bolts (22) and two 3/8" flat washers (26). **See Detail A.** Do not tighten completely. Insert post into designated holes. Set the posts on blocking material (brick) in the hole. Brace the transition deck and posts into position. The finished deck height will be 72".
- \_\_6) **Attach Steps to 6' Deck:** Attach the steps (13) to the deck (9) using three 3/8" x 1" button head bolts (24), six 3/8" flat washers (26), and three 3/8" Nylon lock nuts (27). Do not tighten completely. **See Detail B.** Continue with the bracing of the deck.

Detail A



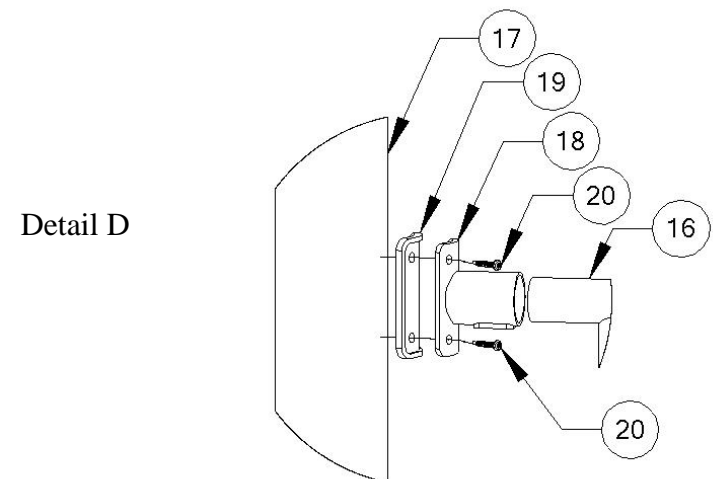
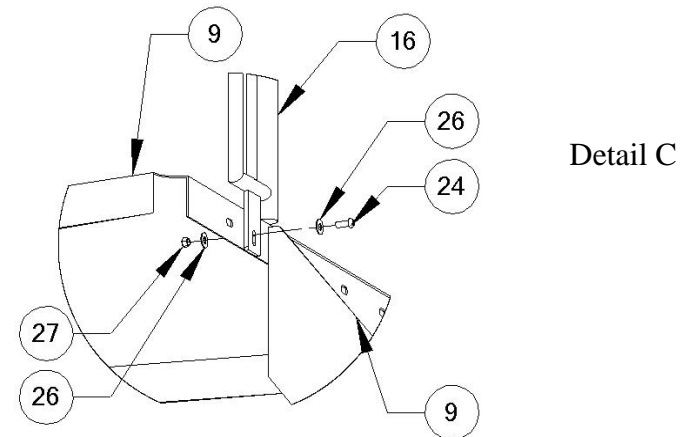
Detail B



### INSTALLATION STEPS CONTINUED

7) Attach the Arch Entry to the deck: Attach the arch entry (16) to the deck (9) using two 3/8" x 1" button head bolts (24), four 3/8" flat washers (26), and two 3/8" Nylon lock nuts (27). Do not tighten completely. See **Detail C**. Continue with the bracing of the deck.

8) Attach the Arch Entry to the Posts: Attach the arch entry (16) to the posts (17) with the four-hole attachment bracket (18). Align the four-hole bracket to the post. Mark hole locations. Drill with #7 drill. Attach the two four-hole brackets (18) and two gaskets (19) with eight self-tapping screws (20). Tighten completely. See **Detail D**.





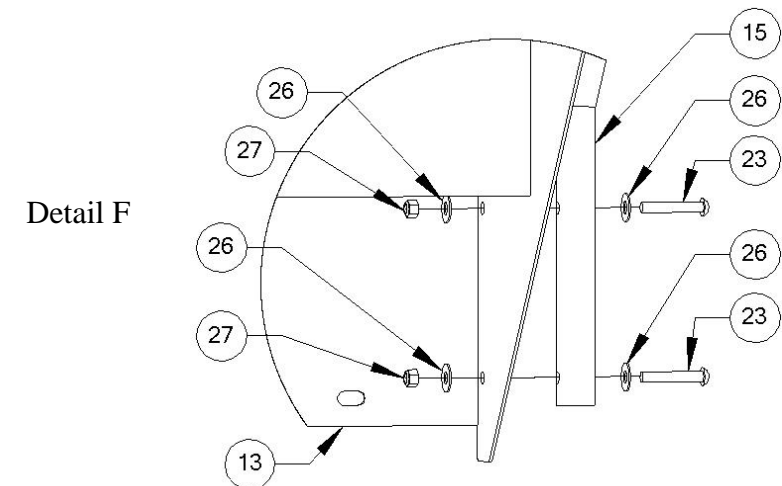
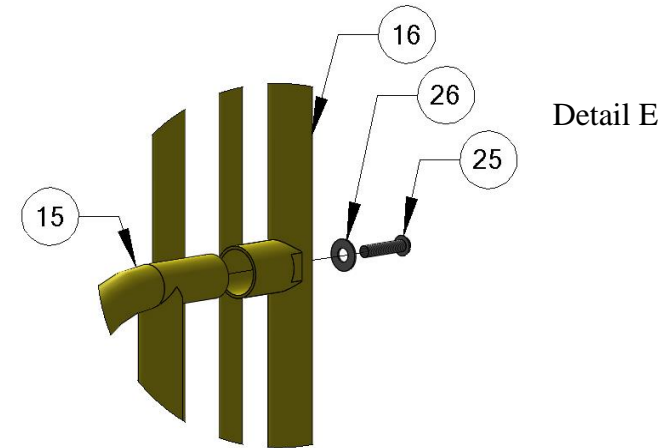
**INSTALLATION STEPS CONTINUED**

\_\_9) **Attach Independent Handrails:** Attach the two independent slide handrails (15) to the arch entry (16) and steps (13). Attach the handrail to the arch entry using two 3/8" x 1 3/4" button head bolts (25) and two 3/8" flat washers (26). **See Detail E.** Attach the handrail to the steps using six 3/8" x 2 1/4" button head bolts (23), twelve 3/8" flat washers (26), and six Nylon lock nuts (27). Do not tighten completely. **See Detail F.**

\_\_10) **Plumb the deck and posts:** Level the deck and posts. Completely tighten bolts connecting the deck and posts. Continue to brace.

\_\_11) **Adjust the Arch Entry:** Center the arch entry between the four-hole attachment brackets. The maximum distance between the post and the first rung of the arch entry **cannot** exceed 3 1/2". Tighten completely the setscrew in the four-hole bracket and the bolts attaching the arch entry to the deck.

**CRITICAL MEASUREMENT:** IT IS EXTREMELY IMPORTANT THAT YOU MAINTAIN A MAXIMUM OF 3 1/2" DISTANCE BETWEEN THE BOTTOM, OR SIDES OF THE SPIRAL WAVE SLIDE ENTRANCE WALL AND THE NEAREST EDGE OF THE DECK OR POSTS.

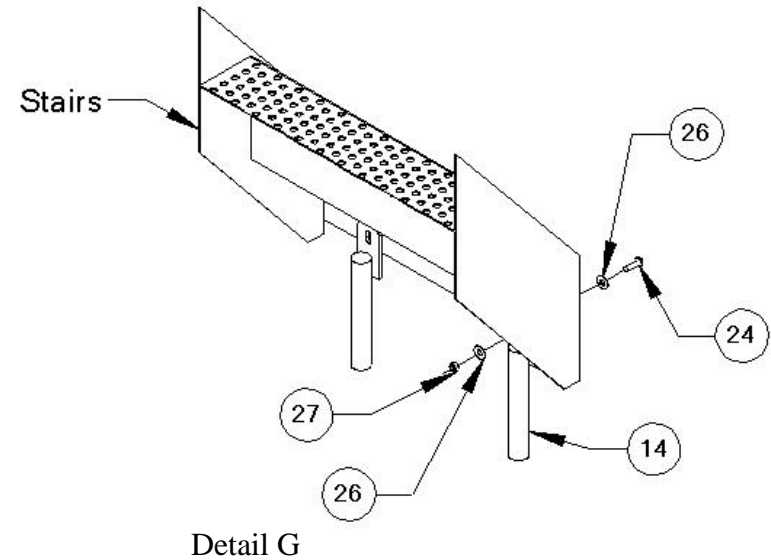


### INSTALLATION STEPS CONTINUED

\_\_12) **Completely tighten other bolts:** With the arch entry positioned, the steps and handrails bolts can be completely tightened.

\_\_13) **Attach Transfer Point Inside Legs:** Place the two Transfer Point Inside Legs (14) into holes previously dug for them. Attach the transfer point inside legs to the steps (13) using two 3/8" x 1" button head bolts (24), four 3/8" flat washers (26), and two 3/8" Nylon lock washers (27). **See Detail G.** Tighten completely.

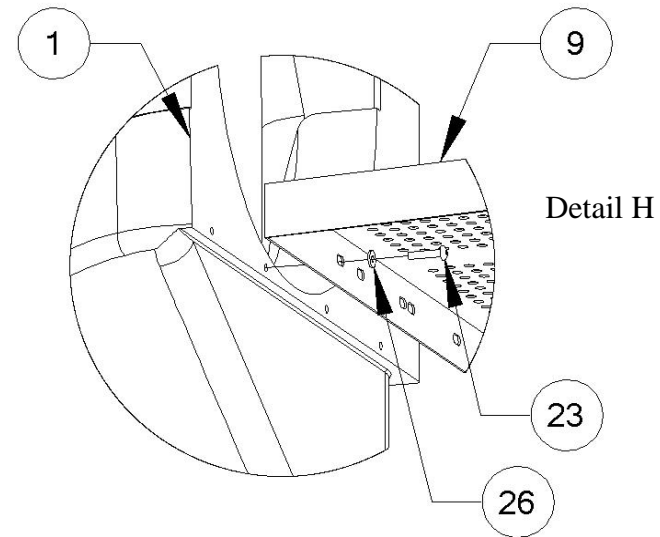
\_\_14) **Concrete posts and Transfer Point Inside Legs footing holes:** When the deck and posts are level and plumb and the deck height is verified at 72" above surfacing, **add the concrete to the footing holes.** Use concrete with a minimum 2,500 psi and mix the concrete per the manufacturer's directions before pouring it into the footing holes. Crown the concrete around each post for water drainage. Maintain the deck bracing. Rope of the area to allow the concrete set properly. Wait to install the spiral slide to the next day.



### INSTALLATION STEPS FOR SPIRAL SLIDE 2<sup>ND</sup> DAY

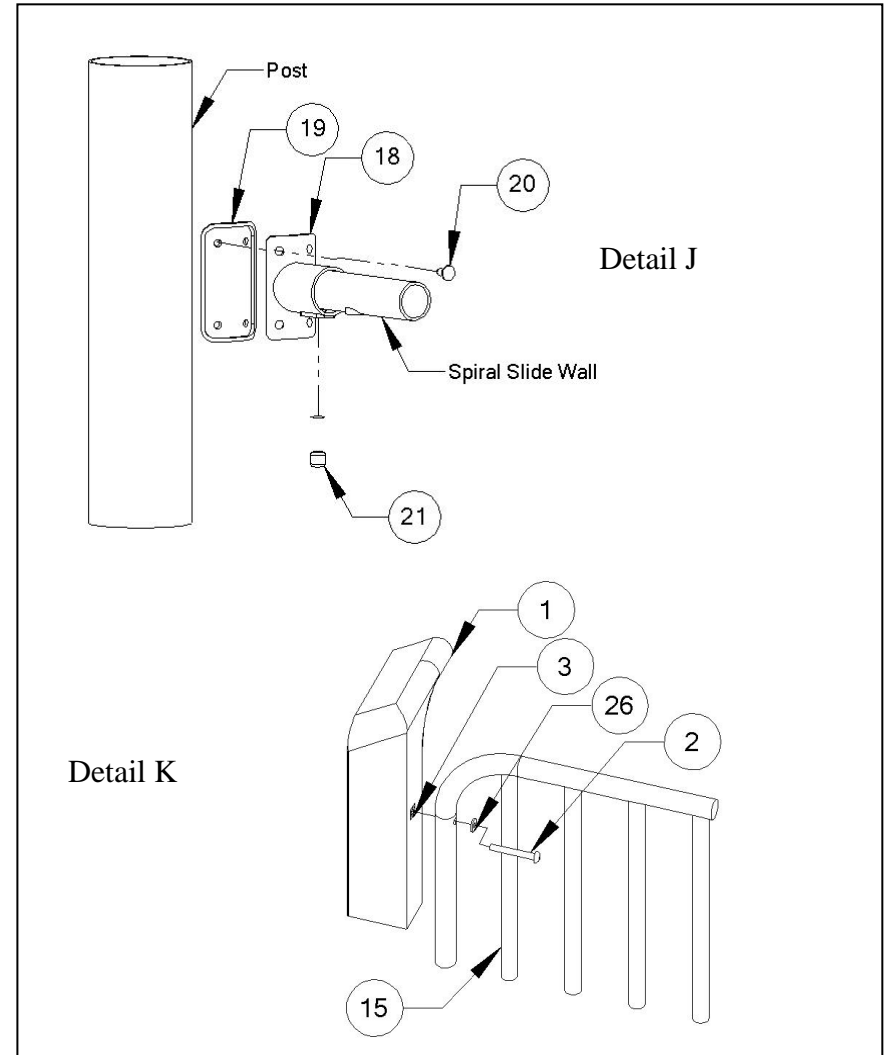
\_\_15) **Set Spiral Slide Post:** The spiral slide post is inside the slide. Measure from the lip of the slide where the Transition Deck attaches to the bottom of the post in the Spiral Slide (1). This measurement will be the distance from the top of the transition deck to the ground plus the depth of your footing hole. *The top of the Transition Deck will be approximately 1" above the rivnut in the post that it attaches.* Tighten the set screws on the base of the Spiral Slide. Place the Spiral Slide into the footing hole.

\_\_16) **Install the Transition deck to the Spiral Slide:** You will need three 3/8" x 2 1/4" button head bolts (23) and three 3/8" flat washers (26). Insert one 3/8" x 2 1/4" button head bolt and one 3/8" flat washer through one of the holes in the Transition Deck (9) and into the insert installed in the Spiral Slide (1). Do not tighten; repeat this step for the three remaining bolts. After all the Bolts are installed in the Spiral Slide and posts you can tighten them. **See Detail H.**

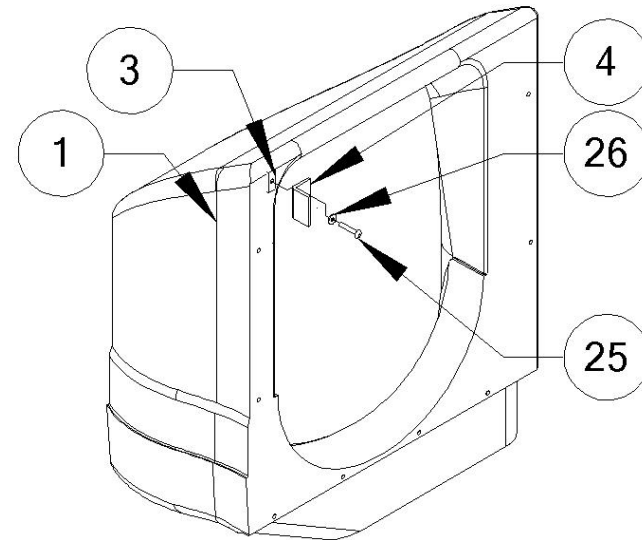


**INSTALLATION STEPS CONTINUED**

\_\_17) **Attach the Walls to the Posts and Spiral Slide:** The top of the Wall (10) for Spiral Slide should be 38" from the top surface of the deck (9) to the top of the Wall. Slide a four 4-Hole brackets onto the wall nubs. Hand tight the setscrew. Hold the Wall to the post that it will connect to and mark the 4-hole bracket holes on each post with a dry erase marker. **See Detail J.** Mark the locations where the wall holes meet the spiral slide. **See Detail K.** Drill the posts with the #7 drill bit. Drill 3/4" holes into the slide. Insert four togglers (3) into the slide. Attach the wall to the slide with four 3/8" x 3" button head bolts (2) and four 3/8" flat washers (26). Attach the wall to the posts with four 4-hole brackets (18), four gaskets (19), and sixteen self-tapping screws (20). Tighten bolts, screws, and setscrews.



\_\_11) **Install the Spiral Slide Filler Angle:** Attach the two Spiral Slide Filler Angles (4) with two togglers (3), two 3/8" x 1 3/4" (25) button head bolts, and two 3/8" flat washers (26). The Spiral Slide Filler Angles attach to the top of face of the Spiral Slide to prevent string entanglements. One side of the angle will touch the spiral slide, and the other face will touch the spiral slide wall. The top of the Spiral Slide Filler Angle should be flush with the top of the spiral slide. Mark the hole and drill the hole with a 3/4" drill bit. Insert the toggler into the hole in the Spiral Slide and secure it with one 3/8" x 1 3/4" (25) button head bolt and 3/8" flat washer (26). **See Detail L.**



Detail L



**INSTALLATION STEPS CONTINUED**

\_\_21) **Pour concrete:** When the independent spiral slide has been installed has verified that the entire playground is level, **add the concrete to the footing holes.** Use concrete with a minimum 2,500 psi and mix the concrete per the manufacturer's directions before pouring it into the footing holes. Crown the concrete around each post for water drainage. Rope of the area for a minimum of 48 hours to allow the concrete set properly.

\_\_22) **Once the concrete has set,** back fill dirt over the footing holes. Inspect the area and components for tools, hazardous debris, and sharp edges. Verify all components are installed and all hardware is tight and then install the safety surfacing.

\_\_23) **Inspect the components:** Inspect for sharp edges. If necessary, file them down and apply touch up paint.

