

LA-BW24-12S BALL WALL ELEVATION

ITEM	QTY.	PART NO.	DESCRIPTION
1	4	F02BW456	4" x 4" x 5/16" STRUCT. TUBE @ 16'-0"
2	20	P02BW418	METAL STUD @ 7'-6" (OUTSIDE BAYS)
2A	10	P02BW419	METAL STUD @ 7'-8" (INSIDE BAY)
3	60	P02BW801	3" x 3" x 1-1/2" @ 8 GA. CLIP
4	18	P08BW408	4' X 8' X 1/2" AC EXTERIOR PLYWOOD (BOTH SIDES)
5	2	F02BW160	18 GA. SHEETMETAL CAP / 2 PIECES @ 12'-0" w/ SEAM COVER
6	2	F02BW120	18 GA. SHEETMETAL CAP @ 12'-0"
7	120	P01BW101	5/16" HEX A/F 4 POINT SCREW
8	1250	P01BW102	QUADREX OUTDOOR SCREW - PLYWOOD TO FRAME
9	120	P01BW103	PANHEAD NO. 10 X 1/2"- CAP AND SIDES TO PLYWOOD
10	2	P01BW900	SILICONE TUBES

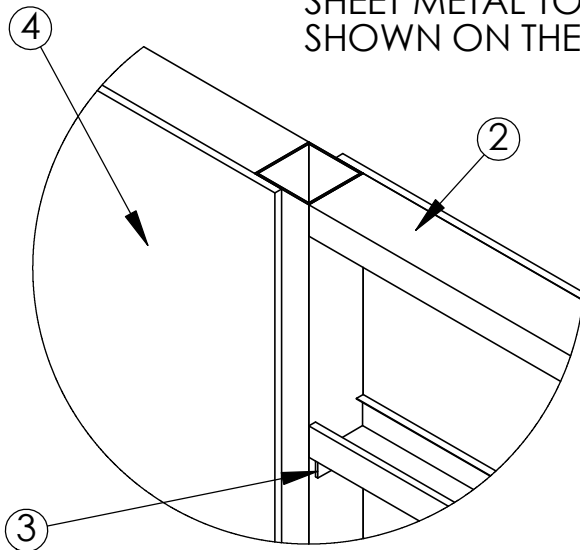
NOTE: SPECIFICATIONS ARE SUBJECT TO CHANGE

DO NOT SCALE DRAWING

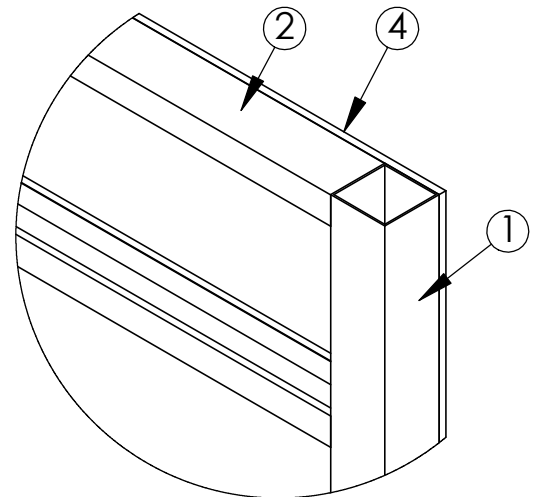
DATE : 2/22/17

DRAWN BY: AFS

SHEET METAL TOP AND END CAPS NOT SHOWN ON THESE DETAILS



MIDDLE DETAIL



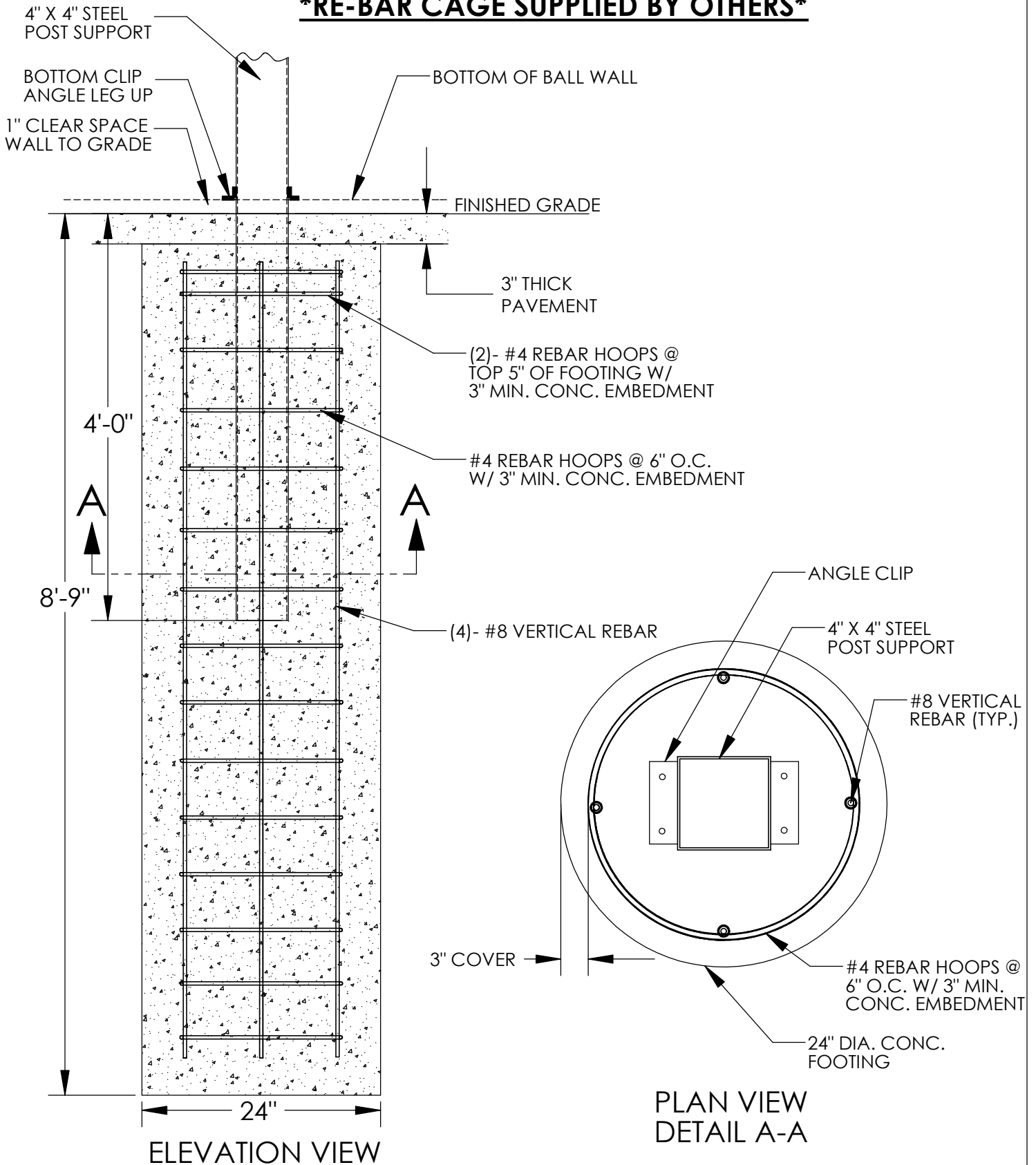
CORNER DETAIL

ASSEMBLY INSTRUCTIONS:

1. THERE ARE FOUR SQUARE STEEL POSTS. TWO HAVE "CLIPS" ON BOTH SIDES AND TWO HAVE CLIPS ON ONE SIDE ONLY. THE ONES WITH CLIPS ON BOTH SIDES ARE THE CENTER POSTS AND THE OTHER TWO ARE THE END POSTS.
2. DIG FOUR FOOTINGS AS SHOWN ON SHEET 1. PLACE THE PROPER POST INTO THE FOOTING HOLE AND SUPPORT THEM IN A PLUMB AND LEVEL POSITION AT THE PROPER SPACING. BE SURE THEY ARE PROPERLY ALIGNED AND AT THE PROPER HEIGHT ABOVE FINISHED GRADE. THE BOTTOM "CLIP" HAS TO BE 1 inch ABOVE THE HIGHEST FINISHED GRADE.
3. NOTE THAT THERE ARE TWO LENGTHS OF LIGHT GAGE METAL STUDS. THE SHORT ONES GO IN THE OUTSIDE BAYS AND THE LONG ONES IN THE MIDDLE BAY.
4. ATTACH THE LIGHT GAGE METAL STUDS BY SCREWS THROUGH THE STUD INTO THE "CLIPS". THE TOP STUD SHOULD HAVE THE FLAT SIDE UP. ALL THE REMAINING STUDS HAVE THE FLAT SIDE DOWN. TWO SCREWS PER CLIP IS NECESSARY.
5. CHECK TO MAKE SURE THE FRAME IS PLUMB AND LEVEL. POUR 2500 psi CONCRETE INTO THE FOOTING HOLES AND WAIT 32 HOURS BEFORE PROCEEDING.
6. APPLY SILICONE CAULKING TO THE FACE OF THE STUDS AT APPROXIMATELY 10" ON CENTER. THIS IS TO IMPROVE THE SOUND DAMPENING OF THE WALL WHEN USED.
7. ATTACH THE PLYWOOD SHEETS TO THE FRAME. MAKE SURE THE OVERLAY IS TO THE OUTSIDE OF THE WALL. USE THE QUADREX™ LIFE COAT™ SCREWS AND SHOULD BE AT 8" MIN SPACING. (NOTE: SUGGEST PRE-DRILLING WITH 1/8" DRILL LOCATIONS WHERE SCREW ATTACHES PLYWOOD TO VERTICAL STEEL SUPPORTS)
8. SCREW THE SHEETMETAL CAPS TO THE TOP AND SIDES TO COMPLETE THE INSTALL.
9. PAINT SURFACES WITH TWO COATS OF PROPER PAINT. PAINT IS SUPPLIED BY OTHERS.

NOTE: SPECIFICATIONS ARE SUBJECT TO CHANGE

RE-BAR CAGE SUPPLIED BY OTHERS



NOTE: SPECIFICATIONS ARE SUBJECT TO CHANGE

DO NOT SCALE DRAWING

DATE: 8/5/10

DRAWN BY: A.F.S

*** NOT FOR DSA SUBMITTAL ***