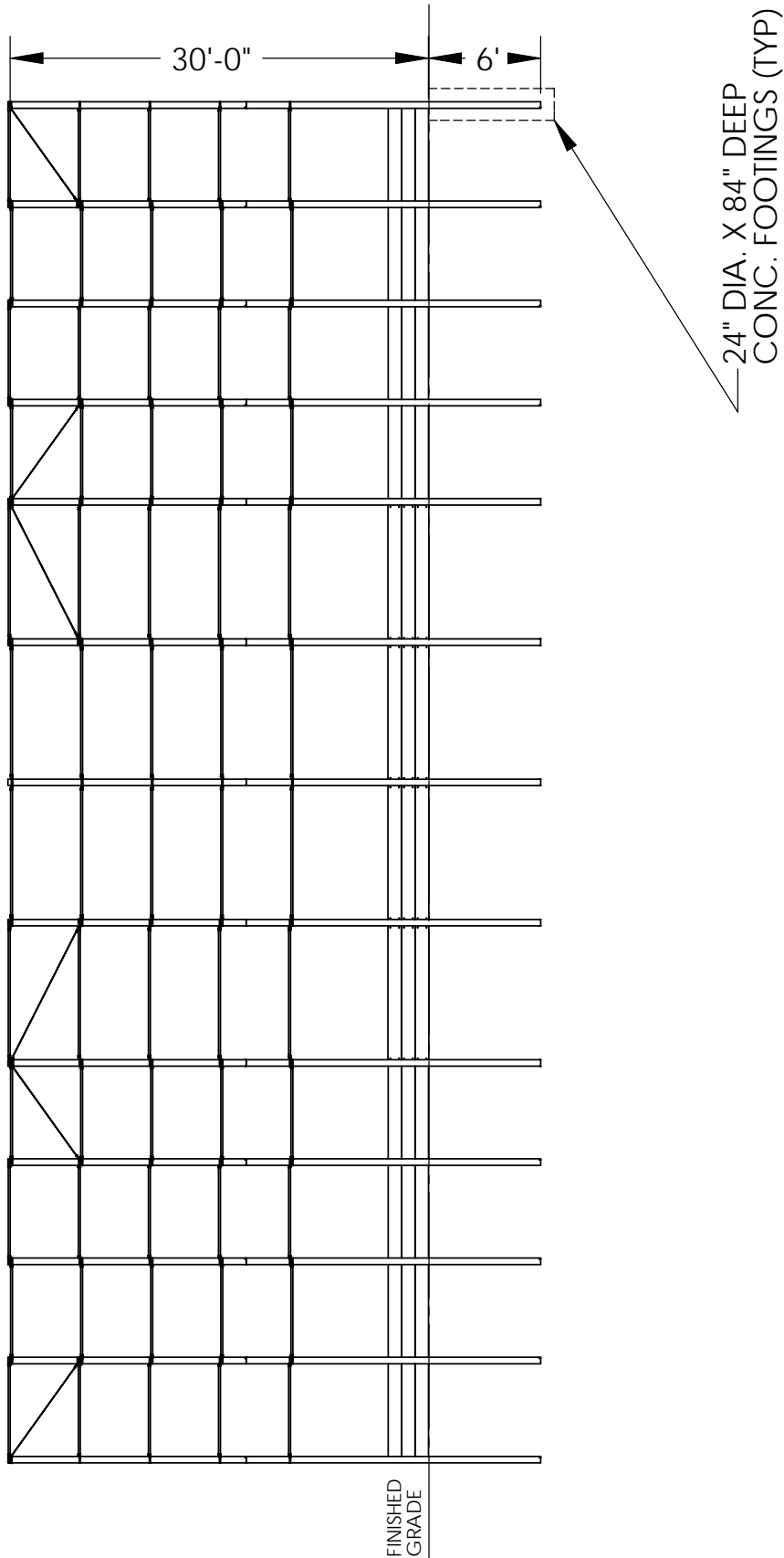


STEELCRAFT PRODUCTS

P.O. Box 90365 - Pasadena, CA 91109
PHN 626-798-7401 FAX 626-798-1482

MODEL
BS-45-ADA
BASEBALL BACKSTOP



ELEVATION VIEW

NOTE: SPECIFICATIONS ARE SUBJECT TO CHANGE

DO NOT SCALE DRAWING

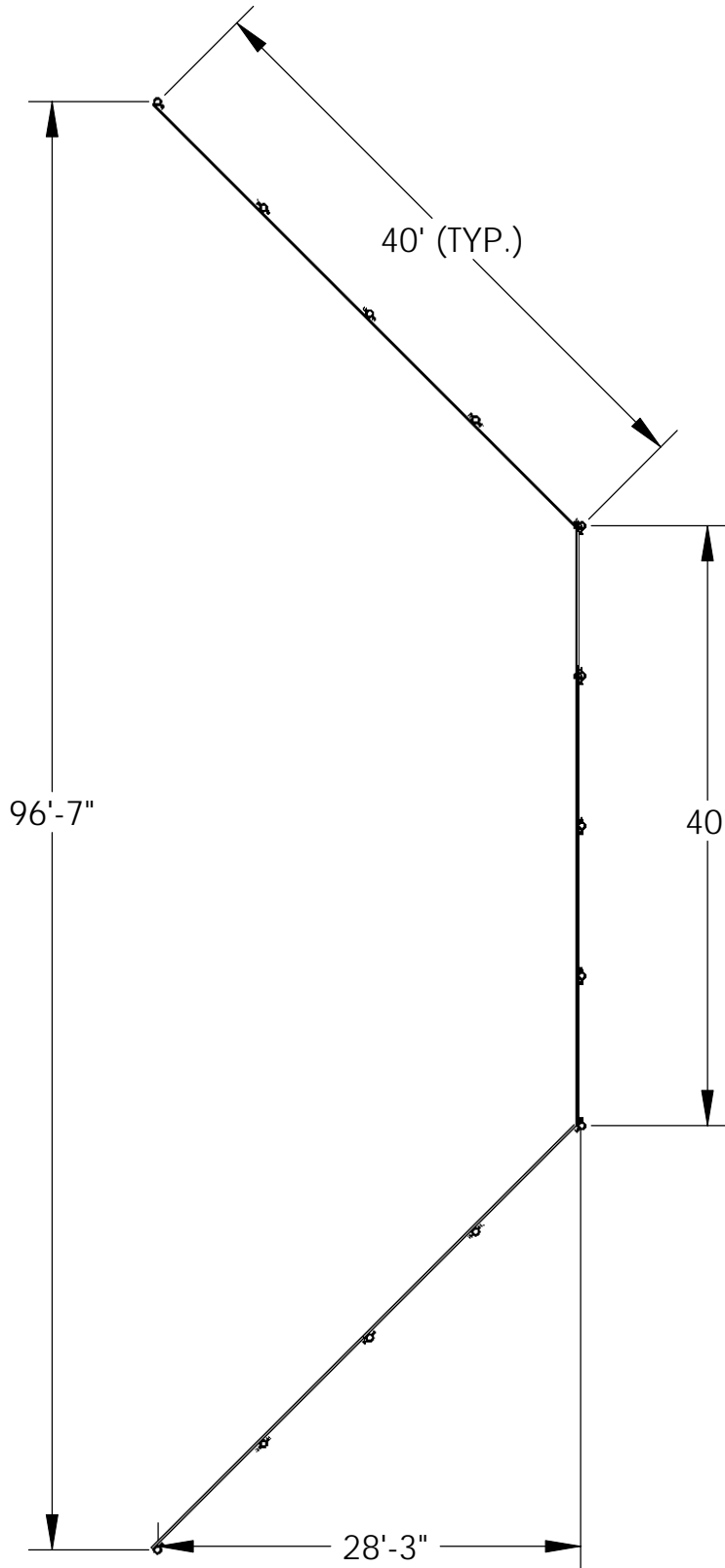
DATE: 11/30/11

DRAWN BY: AFS

STEELCRAFT PRODUCTS

P.O. Box 90365 - Pasadena, CA 91109
PHN 626-798-7401 FAX 626-798-1482

MODEL
BS-45-ADA
BASEBALL BACKSTOP



PLAN VIEW

NOTE: SPECIFICATIONS ARE SUBJECT TO CHANGE

DO NOT SCALE DRAWING

DATE: 11/30/11

DRAWN BY: AFS

STEELCRAFT PRODUCTS

P.O. Box 90365 - Pasadena, CA 91109
PHN 626-798-7401 FAX 626-798-1482

MODEL

BS-45-ADA
BASEBALL BACKSTOP

DO NOT SCALE DRAWING

ASSEMBY INSTRUCTIONS

1. START WITH A LEVEL AREA FOR THE BACKSTOP.
2. LAYOUT THE FOOTING LOCATIONS ACCORDING TO THE PLAN VIEW DRAWING. MAKE SURE THAT THE LOCATION IS IN ACCORDANCE WITH SITE PLAN REQUIREMENTS.
3. DIG THE THIRTEEN FOOTINGS TO THE NECESSARY DIAMETER AND DEPTH (24" DIA. X 84" DEEP).
4. SET THE THIRTEEN 5-9/16" POSTS IN THE FOOTING HOLES. MAKE SURE THAT POSTS ARE PLUMB, STRAIGHT AND PROPERLY SPACED. POUR CONCRETE IN HOLES AND ALLOW THE CONCRETE TO SET OVERNIGHT.
5. THE NEXT DAY, PLACE THE PLANK TO COLUMN CONNECTOR BRACKETS (ITEMS 6 THRU 9) ON THE PIPE COLUMNS AS SHOWN ON THE ELEVATION DRAWING. MAKE SURE THE RIGHT AND LEFT HAND BRACKETS ARE IN THE PROPER LOCATION.
6. SET THE TOP PIPE COLUMN EXTENSIONS IN THE PROPER LOCATION AS SHOWN ON THE ELEVATION DRAWING. SECURE THE EXTENSIONS WITH THE 5/8" SOCKET SET SCREWS.
7. INSTALL THE HORIZONTAL RAILS (HORIZ. RAILS MUST BE FIELD CUT TO DESIRED LENGTH) WITH THE REQUIRED BRACE BANDS AND RAIL END CUPS USING 5/16" CARRIAGE BOLTS, LOCK WASHERS& NUTS (ITEM 19).
8. SET CENTER PLANK TO COLUMN CONNECTOR BRACKET (ITEM 6) TO THE PROPER GRADE AND LINE WITH THE 5/8" SOCKET SET SCREWS (ITEM 21). USING A LEVEL, SET THE REMAINDER OF THE COLUMN CONNECTOR BRACKETS (ITEMS 6 THRU 9) TO PROPER GRADE AND LINE. SECURE WITH THE 5/8" SOCKET SET SCREWS (ITEM 21).
9. DETERMINE WHERE THE 1/2" HOLES IN THE 2X12 PLANKS (ITEM 5) NEED TO BE DRILLED. DRILL THE 1/2" HOLES AND MARK THE BOARDS TO BE INSTALLED LATER. TRIM THE ENDS OF THE PLANKS TO INSURE A TIGHT END FIT.
10. INSTALL THE TRUSS RODS (ITEM 4) AND TRUSS TIGHTENER USING THE BRACE BANDS AND 5/16" BOLTS WITH NUT AND LOCKWASHERS (ITEM 19) TIGHTEN THE RODS TWO TURNS BEYOND HAND TIGHT WITH A WRENCH.
11. INSTALL THE WIRE FABRIC USING STANDARD FENCING METHODS (COMPLYING TO ASTM CHAIN LINK FENCE STANDARDS). THE TWO WINGS USES TWO 10 FT. WIDE FABRIC ON THE TOP AND ONE 8 FT. ON THE BOTTOM. THE CENTER 40 FT. UTILIZES TWO 10 FT. WIDE FABRIC ON THE TOP AND ONE 6 FT. WIDE ON THE BOTTOM. THE FABRIC IS TO EXTEND BELOW THE TOP OF THE 2X12 PLANKS.
12. INSTALL THE BACKBOARDS USING THE 3/8" X 2-1/2" CARRIAGE BOLTS/ NUTS/ WASHERS (ITEM 20).

NOTE: SPECIFICATIONS ARE SUBJECT TO CHANGE

DO NOT SCALE DRAWING

DATE: 11/30/11

DRAWN BY: AFS