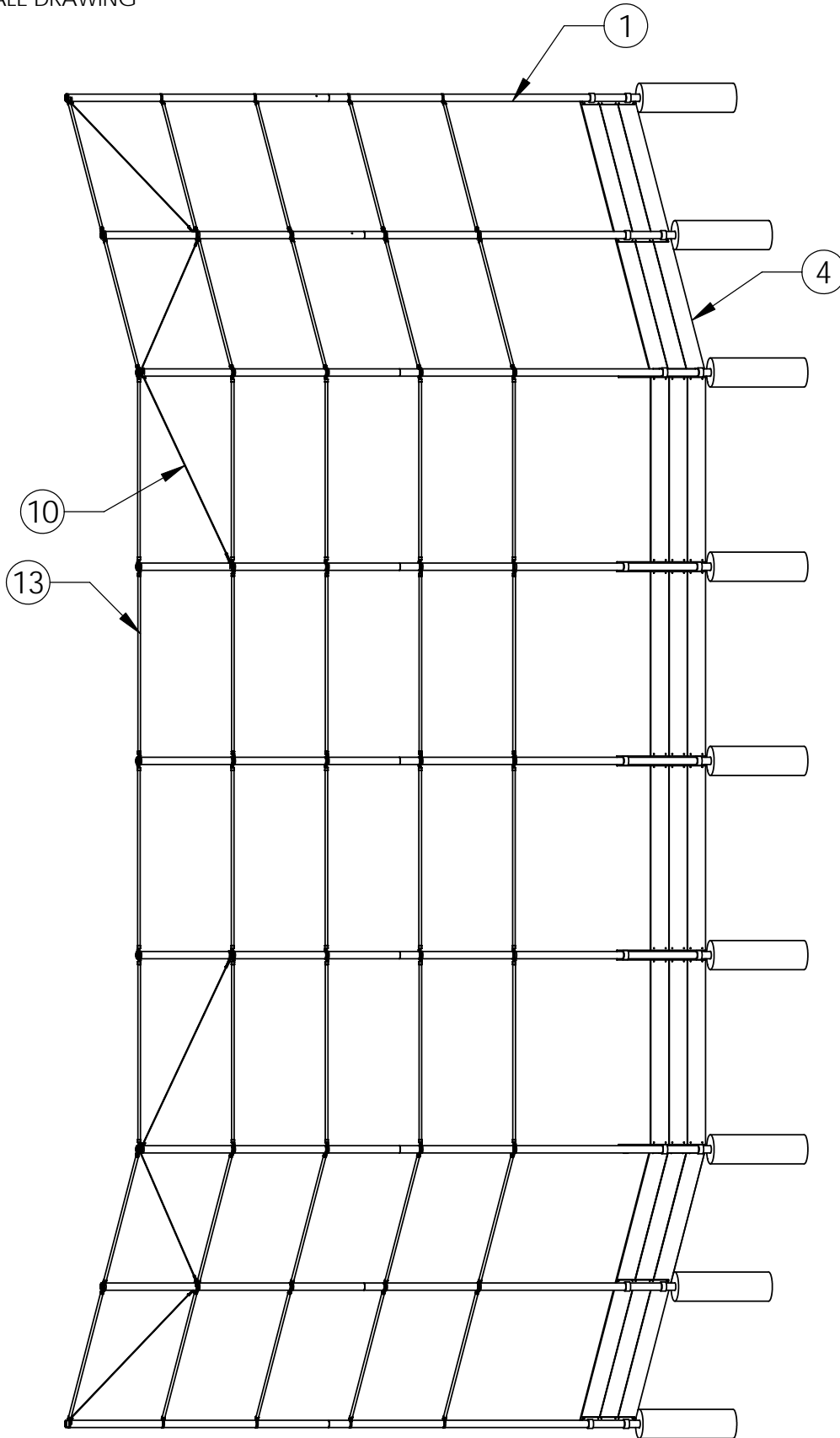


STEELCRAFT PRODUCTS

P.O. Box 90365 - Pasadena, CA 91109
PHN 626-798-7401 FAX 626-798-1482

MODEL
BS-35-ADA
BASEBALL BACKSTOP

DO NOT SCALE DRAWING



BS-35 BASEBALL BACKSTOP

NOTE: SPECIFICATIONS ARE SUBJECT TO CHANGE

DO NOT SCALE DRAWING

DATE: 11/21/11

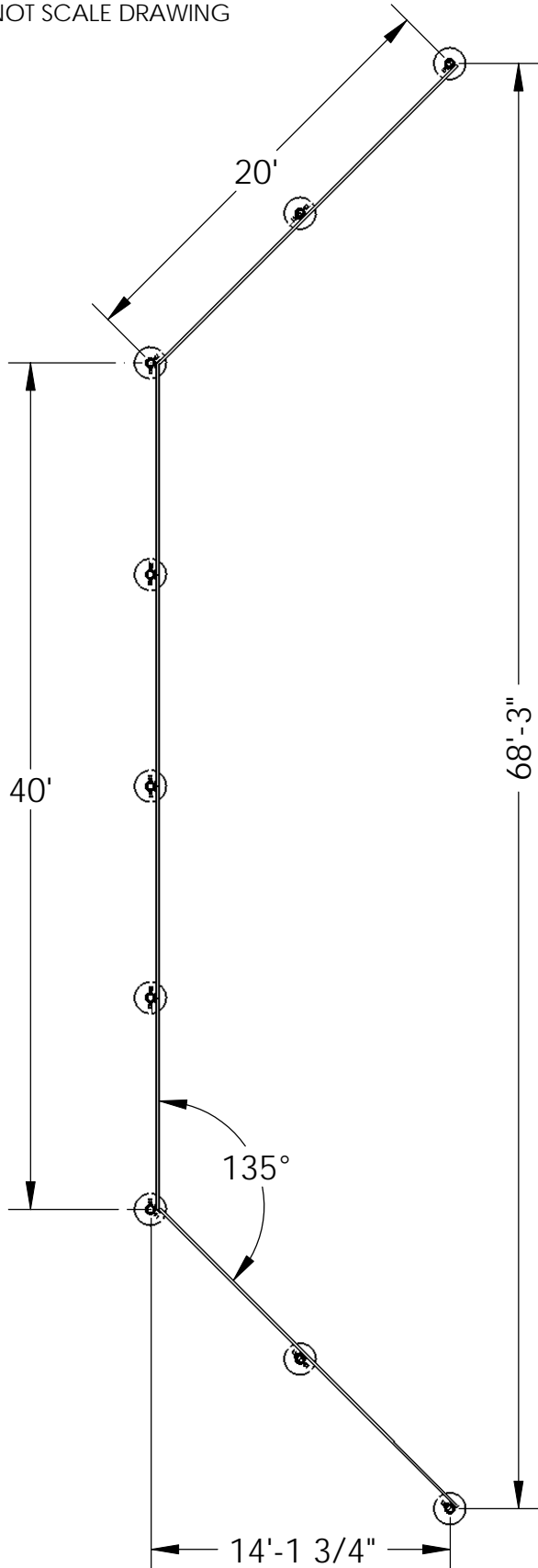
DRAWN BY: AFS

STEELCRAFT PRODUCTS

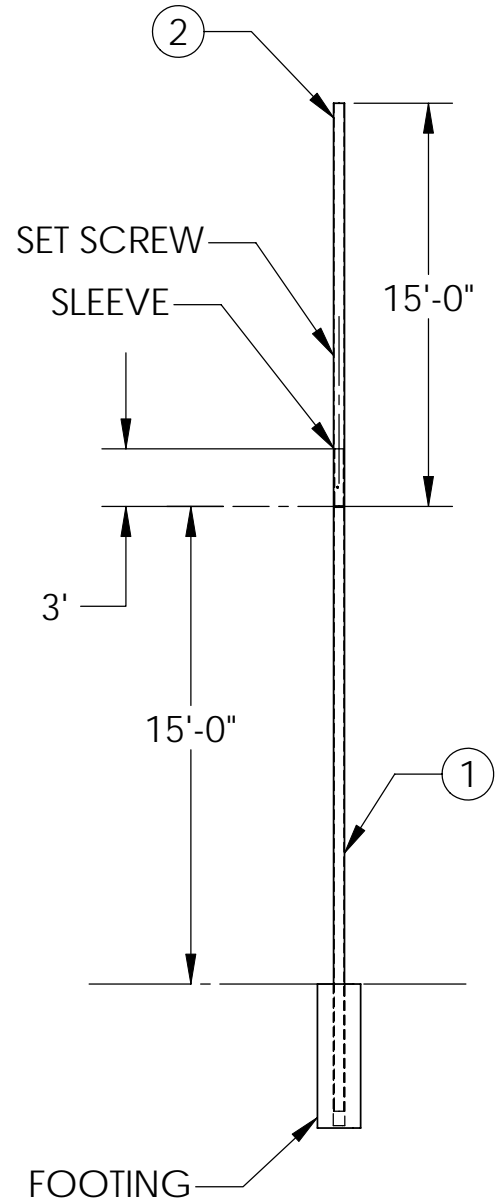
P.O. Box 90365 - Pasadena, CA 91109
PHN 626-798-7401 FAX 626-798-1482

MODEL
BS-35-ADA
BASEBALL BACKSTOP

DO NOT SCALE DRAWING



PLAN VIEW



POST ASSEMBLY

NOTE: SPECIFICATIONS ARE SUBJECT TO CHANGE

DO NOT SCALE DRAWING

DATE: 11/21/11

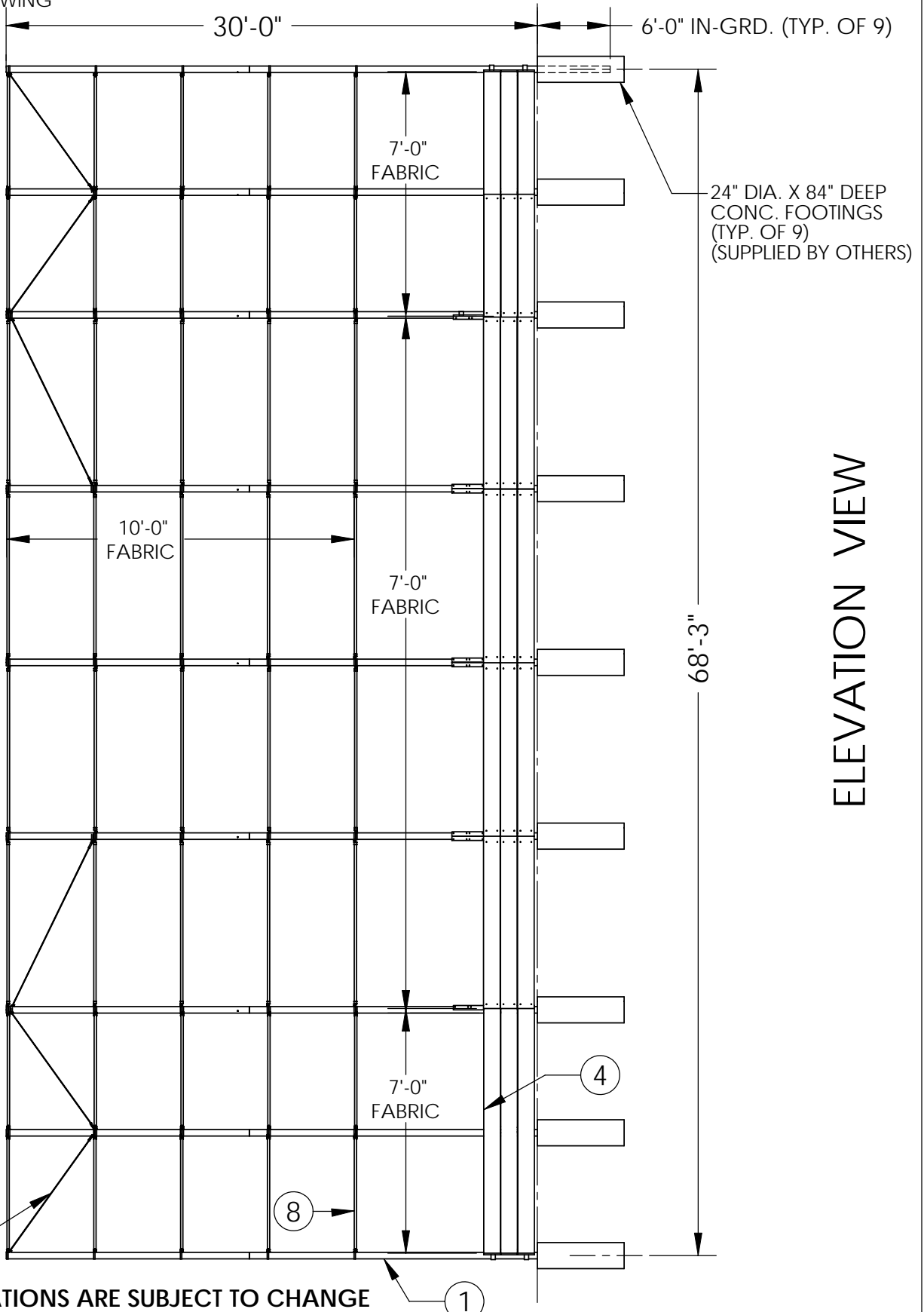
DRAWN BY: AFS

STEELCRAFT PRODUCTS

P.O. Box 90365 - Pasadena, CA 91109
PHN 626-798-7401 FAX 626-798-1482

MODEL
BS-35-ADA
BASEBALL BACKSTOP

DO NOT SCALE DRAWING



ELEVATION VIEW

NOTE: SPECIFICATIONS ARE SUBJECT TO CHANGE

DO NOT SCALE DRAWING

DATE: 11/21/11

DRAWN BY: AFS

STEELCRAFT PRODUCTS

P.O. Box 90365 - Pasadena, CA 91109
PHN 626-798-7401 FAX 626-798-1482

MODEL
BS-35-ADA
BASEBALL BACKSTOP

DO NOT SCALE DRAWING

ASSEMBY INSTRUCTIONS

BE SURE THE AREA IS REASONABLY LEVEL BEFORE DIGGING FOOTING HOLES. BECOME FAMILIAR WITH THE PARTS.

1. LOCATE AND DIG NINE (9) FOOTING HOLES AT 24" DIA. X 84" DEEP AS SHOWN.
2. PLACE THE 5-9/16" OD POSTS (WITH THE SLEEVE EXTENSIONS IN THE TOP) IN THE FOOTING HOLES AND SUPPORT IN A PLUMB POSITION WITH THE TOP OF THE SLEEVE AT 18'-0" ABOVE FINISHED GRADE. DO NOT PLACE THE SLEEVE IN THE FOOTING.
3. POUR CONCRETE IN THE FOOTING HOLES AND WAIT 17 HOURS BEFORE PROCEEDING.
4. PLACE THE PLANK TO COLUMN CONNECTOR BRACKETS ON THE PIPE COLUMNS. THERE ARE FOUR CONFIGURATIONS OF THESE BRACKETS. ONE IS FOR THE CENTER BACK POSTS AND IS TO RECEIVE FIVE PLANKS. ONE IS FOR THE CORNER BUT IS RIGHT AND LEFT HAND FOR THE RESPECTIVE CORNERS. ONE IS FOR THE CENTER WING POSTS AND IS TO RECEIVE THREE PLANKS. THE LAST ONE IS FOR THE END POSTS. MAKE SURE THE RIGHT AND LEFT HAND BRACKETS ARE IN THE PROPER LOCATIONS AT THE CORNERS.
5. PLACE THE BRACE BANDS IN THE LOCATIONS WITH THE END CUPS IN PLACE FOR INSTALLING THE HORIZONTAL BRACES (HORIZ. BRACES MUST BE FIELD CUT TO DESIRED LENGTH). START AT THE TOP AND THE SPACING IS TO BE 5'-0". USE THE 5/16" CARRIAGE BOLTS, LOCK WASHERS AND NUTS FOR ATTACHMENT.
6. INSERT THE TOP 5-9/16" OD POSTS ONTO THE BASE POSTS. ORIENT THE POSTS SO THE SET SCREWS WILL NOT INTERFERE WITH STRETCHING THE FABRIC. TIGHTEN THE SET SCREWS. PLACE CAPS ON THE POSTS.
7. ATTACH ONE REAR BOTTOM PLANK TO COLUMN CONNECTOR BRACKET AND ADJUST TO THE PROPER GRADE AND LINE. TIGHTEN THE 5/8" SOCKET SET SCREWS ON THE CONNECTOR BRACKET. USING A LEVEL, SET THE REMAINDER OF THE BRACKETS TO LINE AND GRADE.
8. DETERMINE WHERE THE 1/2" HOLES IN THE 2X12 PLANKS NEED TO BE DRILLED. DRILL THE HOLES AND MARK THE BOARDS TO BE INSTALLED LATER. TRIM THE ENDS OF THE BOARDS TO INSURE A TIGHT END FIT.
9. INSTALL THE TRUSS RODS AND TRUSS TIGHTENERS USING THE BRACE BANDS. TIGHTEN THE RODS TWO TURNS BEYOND HAND TIGHT WITH A WRENCH.
10. INSTALL THE WIRE FABRIC USING STANDARD FENCING METHODS (COMPLYING TO ASTM CHAIN LINK FENCE STANDARDS). THE FABRIC IS TO BE INSTALLED ON THE PLAYING SIDE OF THE BACKSTOP. THE TOP ROW OF FABRIC IS 10 ft. THE TWO WINGS AND CENTER BACK USE 8 ft. WIDE FABRIC.
11. INSTALL THE BACKBOARDS USING THE 3/8" X 2-1/2" CARRIAGE BOLTS/NUTS/WASHERS.
12. PAINT THE BOARDS. THROW THE BRUSH AWAY, CLEAN UP AND YOU ARE DONE.

NOTE: SPECIFICATIONS ARE SUBJECT TO CHANGE

DO NOT SCALE DRAWING

DATE: 11/21/11

DRAWN BY: AFS