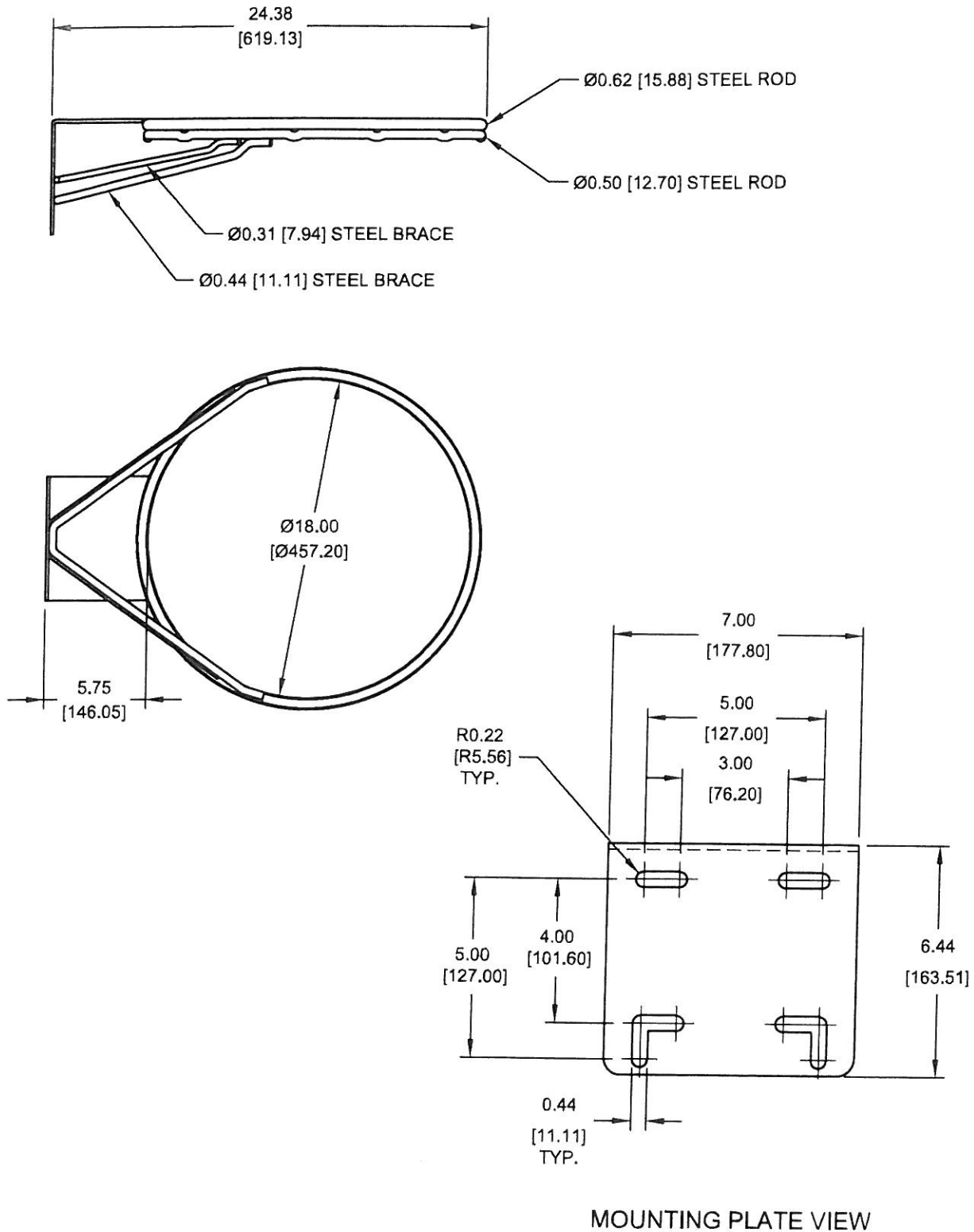


# STEELCRAFT PRODUCTS

P.O. Box 90365 - Pasadena, CA 91109  
PHN 626-798-7401 FAX 626-798-1482

MODEL  
600  
DOUBLE GOAL RIM



**NOTE: SPECIFICATIONS ARE SUBJECT TO CHANGE**

DO NOT SCALE DRAWING

DATE: 2/2/09

DRAWN BY: AFS

# STEELCRAFT PRODUCTS

P.O. Box 90365 - Pasadena, CA 91109  
PHN 626-798-7401 FAX 626-798-1482

MODEL  
600  
DOUBLE GOAL RIM

## 600 DOUBLE GOAL RIM

The 600 goal is constructed with an official size 18" double ring of 5/8" and 1/2" dia. steel. A 6-1/2" X 7" universal back mounting plate accommodates most 42" and 48" fan and rectangular shaped backboards. Double 7/16" dia. braces all welded construction for extra rigidity. Includes durable orange powder coated finish, chain net especially designed for use with double-ring and all hardware.

WEIGHT: 20LBS.

**NOTE: SPECIFICATIONS ARE SUBJECT TO CHANGE**

DO NOT SCALE DRAWING

DATE: 1/19/09

DRAWN BY: AFS